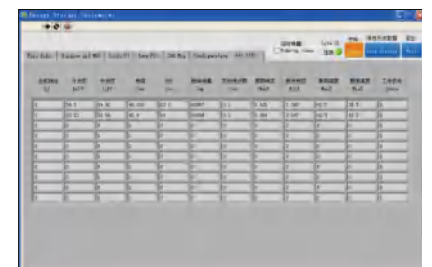
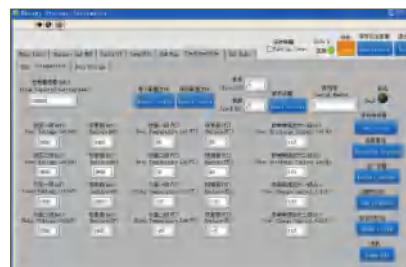
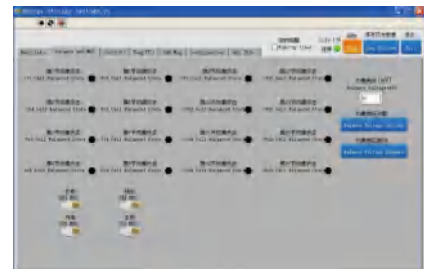
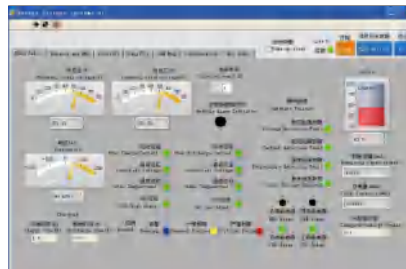




5.12 KWH RV LiFePO4 Battery Pack

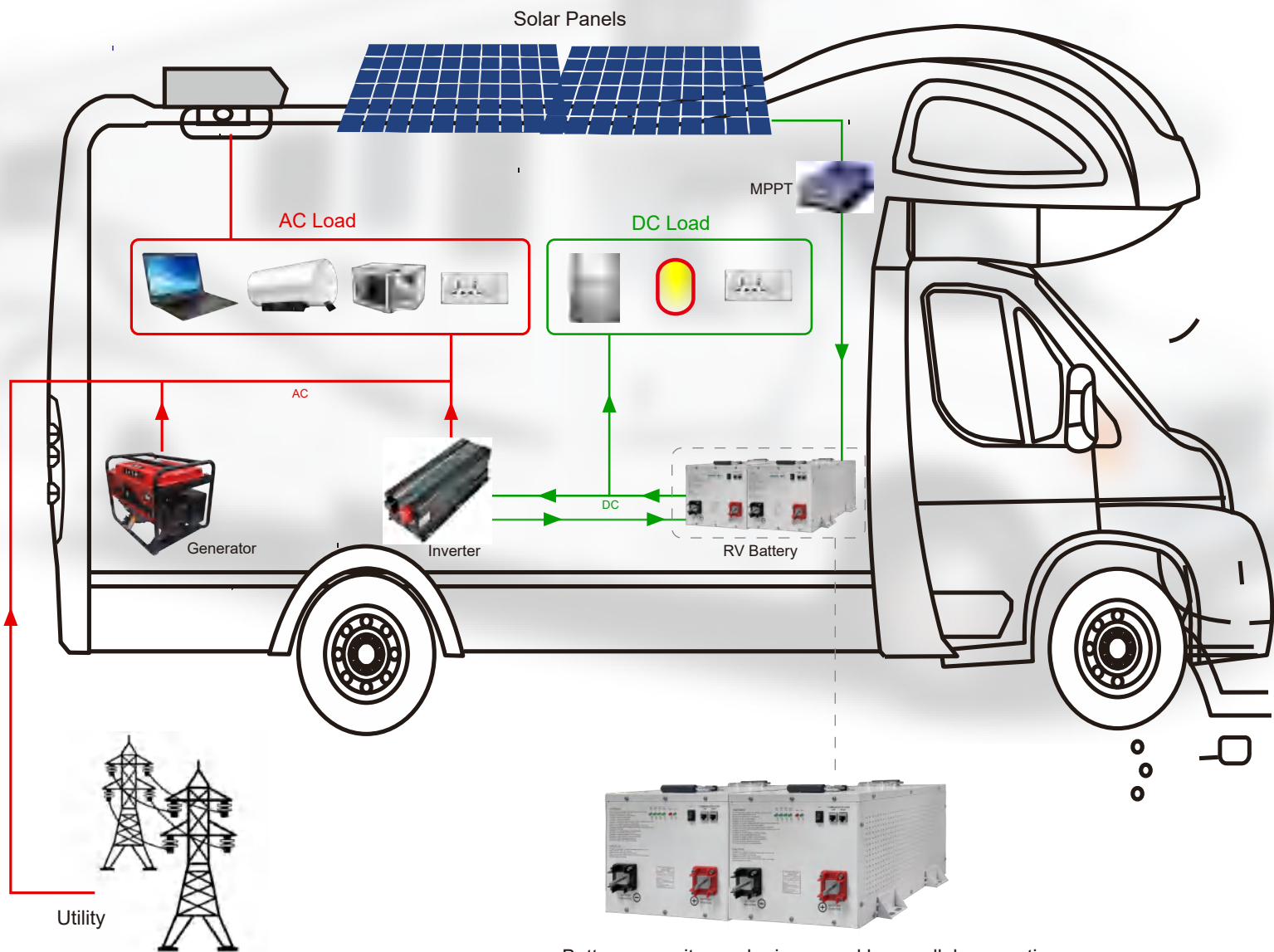
LFP12400RV / LFP24200RV / LFP48100RV

- ◆ 16PCS 100AH LIFEP04 Battery inside
- ◆ 12.8/25.6/51.2Vdc 5.12KWH rated capacity
- ◆ Long cycle life 3500 times at least on 80%DOD
- ◆ Customized charger make system life maxmization
- ◆ High reliability intelligent BMS
- ◆ Unique automatic calibration active banlancing technology BMS syestem
- ◆ 12.8/25.6/51.2Vdc voltage output suitable for home energy storage system, communication STATIONS AND OTHER APPLICATION
- ◆ Standard CAN &RS485 communication port, can meet the require- ment of several packages to connect in parallel, Master & Slave relationship, Monitor and Other prolongation functions.
- ◆ Ip31 Protection, indoor use only.
- ◆ Environment: 0-30 C ,65% Humidity



Product Application

Energy storage in power system including solar panels, inverter (for AC and DC conversion), and provide backup power for the main electrical backup lines. Household electricity demand different choice of different components.



BASIC Specification

Battery		Description		
Normal specification				
	Model	LFP12400RV	LFP24200RV	LFP48100RV
1	Rated Voltage	12.8V	25.6V	51.2V
2	Rated Capacity	400Ah	200Ah	100Ah
3	Rated Energy	5.12KWH		
4	Cell Configuration	4S4P	8S2P	16S1P
5	Battery Cell	3.2V100AH 16PCS		
Standard Charge				
1	Operation temperature range @charging	0-45°C	0-45°C	0~45°C
2	Rated charge voltage	13.8±0.1V	27.6±0.2V	55.2±0.4V
3	Max charge voltage	14.2±0.1V	28.4±0.2V	56.8±0.4V
4	Overcharge protection	14.6±0.1V	29.2±0.2V	58.4±0.4V
5	Allowed MAX charge current	220A withstand 30s	110A withstand 30s	55A withstand 30s
6	Peak charge current	240A withstand 5s	120A withstand 5s	60A withstand 5s
7	Rated charge current	200A	100A	50A
8	Recommend charge current	<200A	<100A	<50A
Standard discharge				
1	Operation temperature range @discharging	-20~60°C	-20-60°C	-20-60°C
2	Output Voltage Range	10~14Vdc	20~28Vdc	40~56Vdc
3	Recommend Working Range	11.5-13.5Vdc	23~27Vdc	46~54Vdc
4	Discharge Cut-off voltage	10V	20V	40V
5	Allowed MAX discharge current	440A withstand 30s	220A withstand 30s	110 A withstand 30s
6	Peak discharge current	480A withstand 5s	240A withstand 5s	120A withstand 5s
7	Rated discharge current	400A	200A	100A
8	Recommend discharge current	<400A	<200A	<100A
Communication				
1	RS485	For LCD remote		
2	CAN	PC control and monitor		
Storage and Transportation requirements				
1	Storage Temperature	Less than 1 month	-20~35°C	
		Less than 6 month	-10~30°C	
2	Storage Humidity	45~75%RH		
3	SOC	Storage	60-75% SOC	
		Transport	45-55% SOC	
Mechanical Characteristics				
LFP12400RV LFP24200RV LFP48100RV	Dimension H*W*D	Shipping H*W*D	Weight(N.W.)	Weight(G.W.)
	450*320*240mm	550*420*360mm	47KG	50KG